



## Summary of Monthly Operations – July 2013

### General

In total, the 95 Express Lanes:

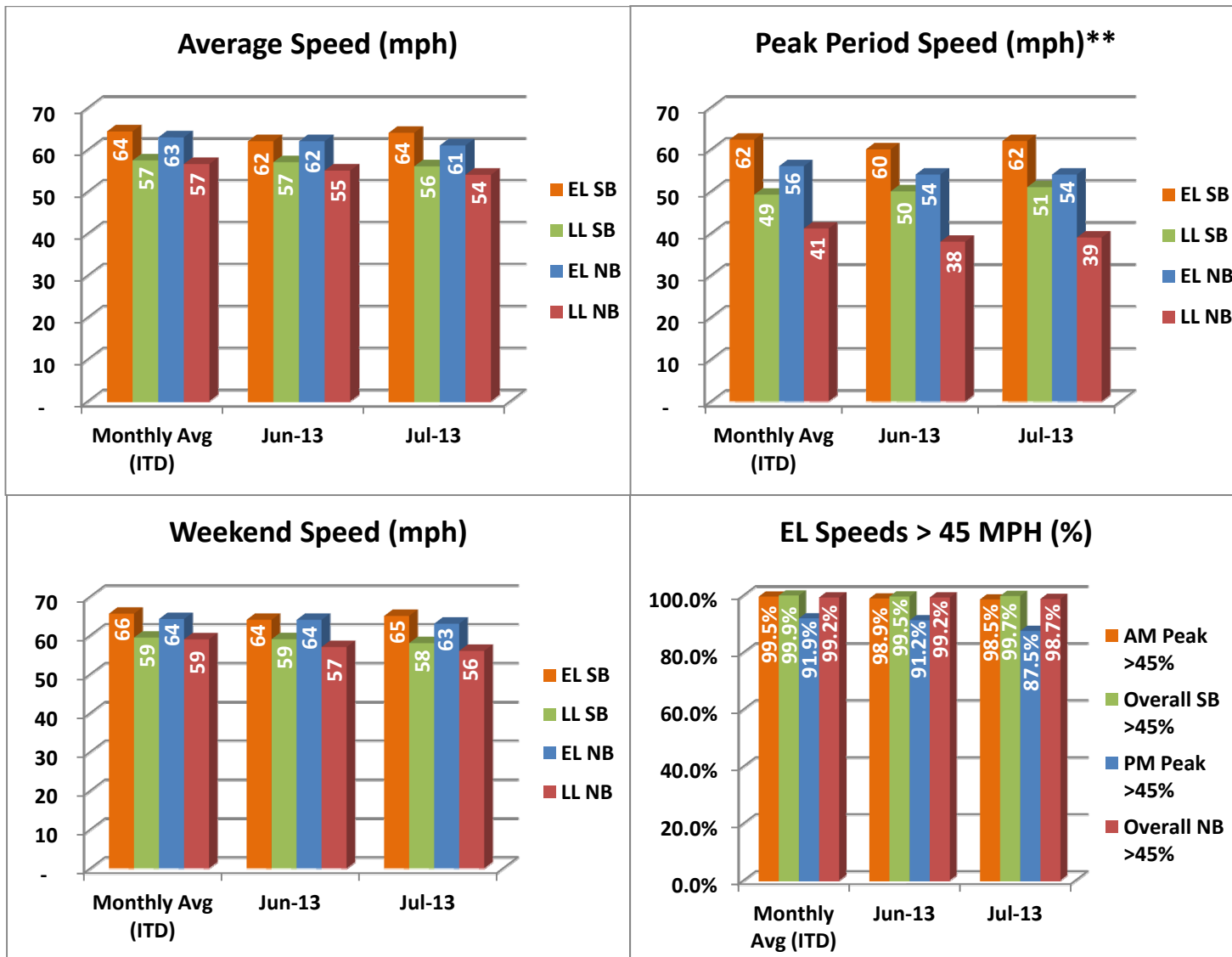
- ✓ Serviced 1,777,072 vehicle trips in July 2013 (12.9 million trips for year 2013 to date), bringing the total since opening (December 5, 2008) to approximately 79.0 million trips.
- ✓ Had estimated monthly toll revenue of \$1.43 million in July 2013 (\$11.8 million for year 2013 to date), bringing the total revenue to date to approximately \$63.4 million.
- ✓ Increased to a total of 9,005 registered vehicles, resulting in 43,145 toll exempt trips.

<u>July 2013 Statistics</u>	<u>Southbound</u>		<u>Northbound</u>			
<b>Total Trips</b>	917,356		859,716			
<b>Exempt Trips</b>	21,830		21,135			
<b>Revenue</b>						
	\$678,391		\$752,460			
<b>Tolls</b>						
- Range	\$0.00 - \$7.00		\$0.00 - \$7.00			
- Avg. Weekday	\$1.00		\$1.21			
- Avg. Peak Period**	\$1.66		\$2.77			
- Avg. Weekend	\$0.25		\$0.23			
- Avg. Off Peak	\$0.76		\$0.60			
- 85 <sup>th</sup> Percentile Weekday	\$2.00		\$2.25			
<b>Volume (veh)</b>						
	<b>EL</b>	<b>LL</b>	<b>EL</b>	<b>LL</b>		
- Avg. Weekday	32,839	105,747	30,535	98,976		
- Avg. Peak Period**	8,643	18,379	8,608	18,065		
<b>Speed (mph)</b>						
	<b>EL</b>	<b>LL</b>	<b>Δ</b>	<b>EL</b>	<b>LL</b>	<b>Δ</b>
- Avg. Overall	64	56	8	61	54	7
- Avg. Peak Period**	62	51	11	54	39	15
<b>Operated Above 45 MPH</b>						
	99.7%		98.7%			
<b>Remained Open to Motorists</b>						
	94.5%		89.1%			
<b>Closed due to Planned Construction</b>						
	3.4%		7.7%			
<b>Closed due to Non-recurring Events</b>						
	2.1%		3.2%			
<i>EL (Express Lanes); LL (Local Lanes)</i>						
<i>**Peak Period is defined as 6-9 AM (southbound) and 4-7 PM (northbound).</i>						



## Operations/Traffic Statistics - Speed Data

\*\* Peak Period is defined as 6-9 AM (southbound) and 4-7 PM (northbound).

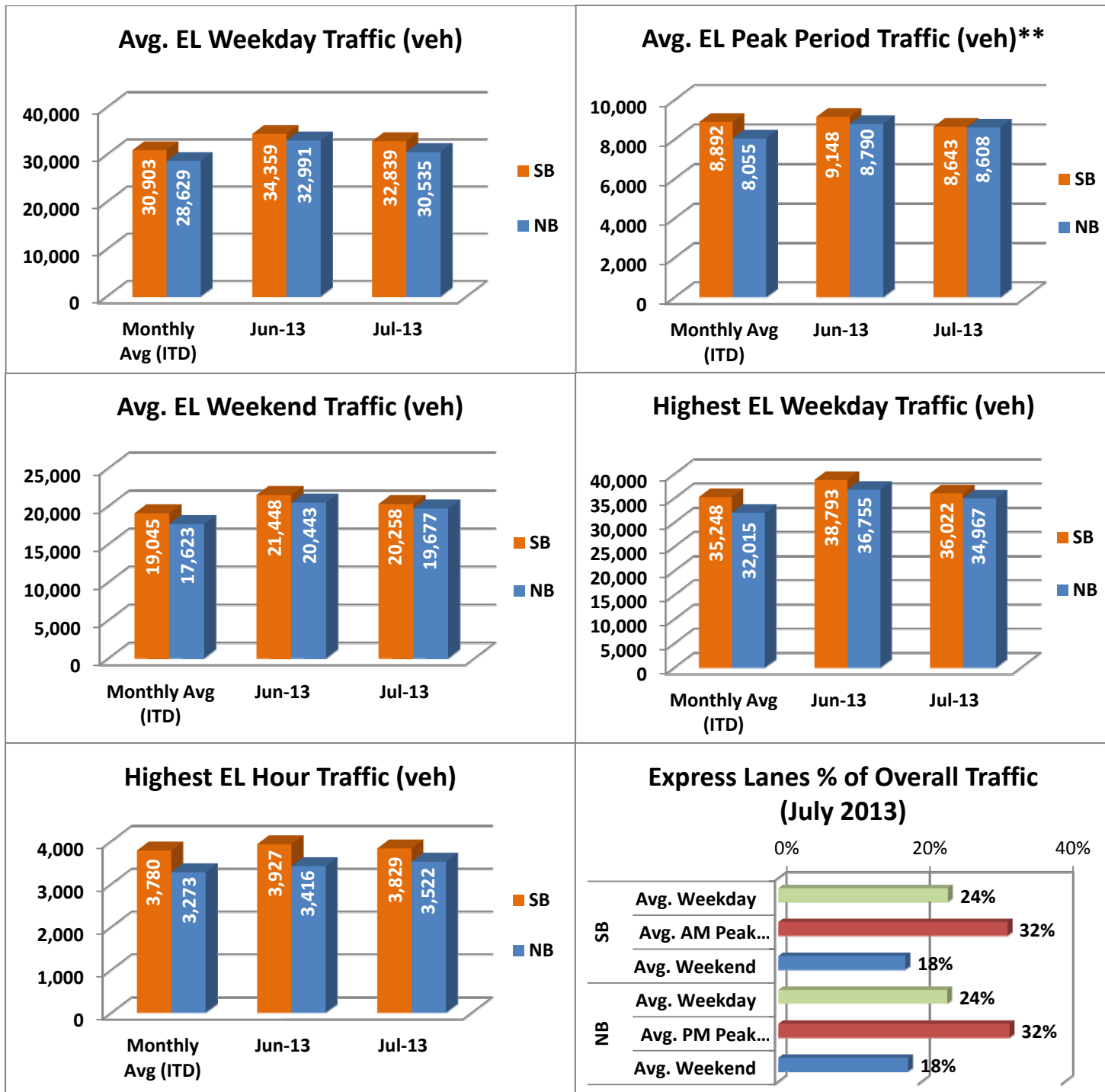


NOTE: ITD = Inception to Date



## Operations/Traffic Statistics - Volume Data

\*\* Peak Period is defined as 6-9 AM (southbound) and 4-7 PM (northbound).

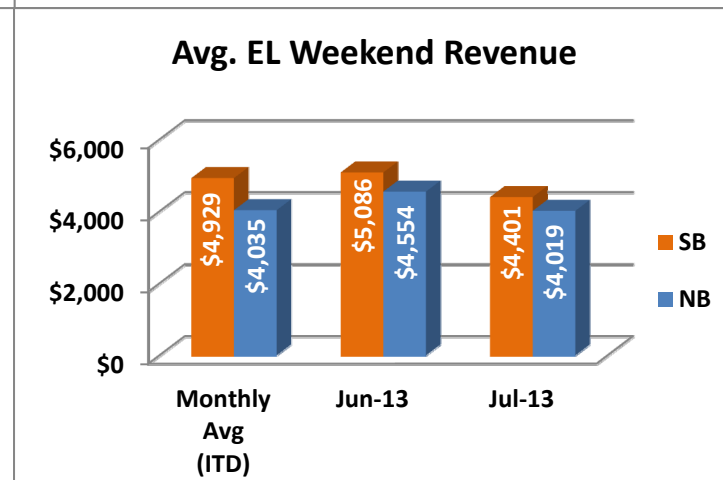
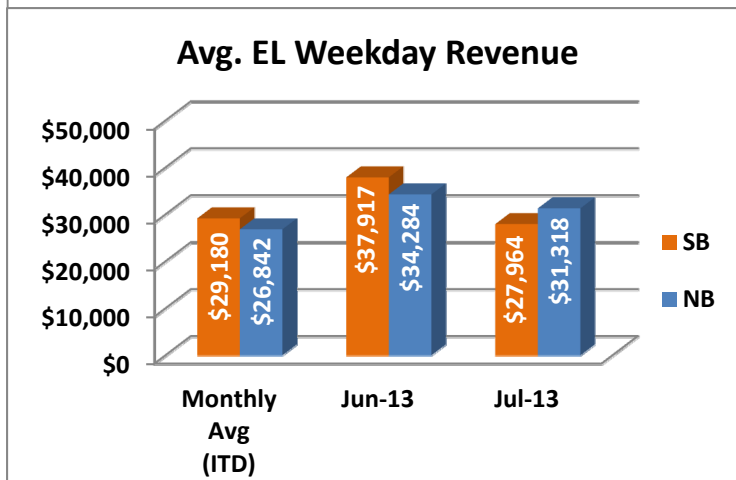
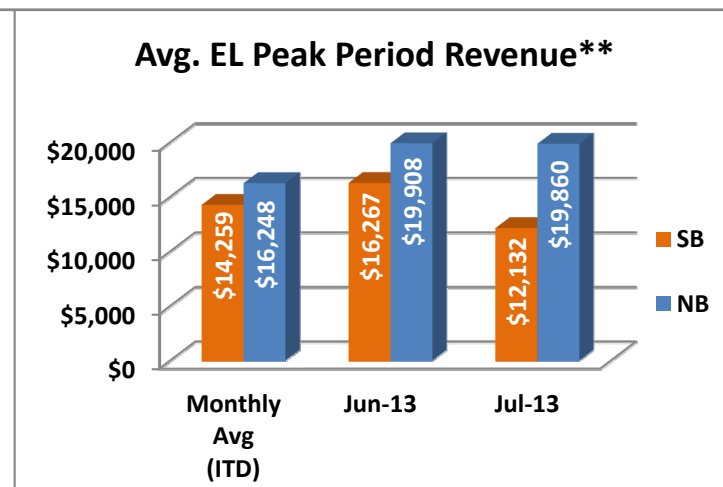
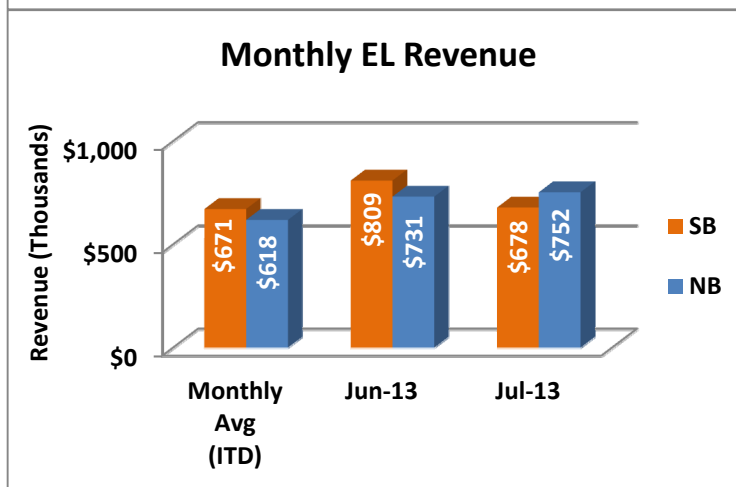
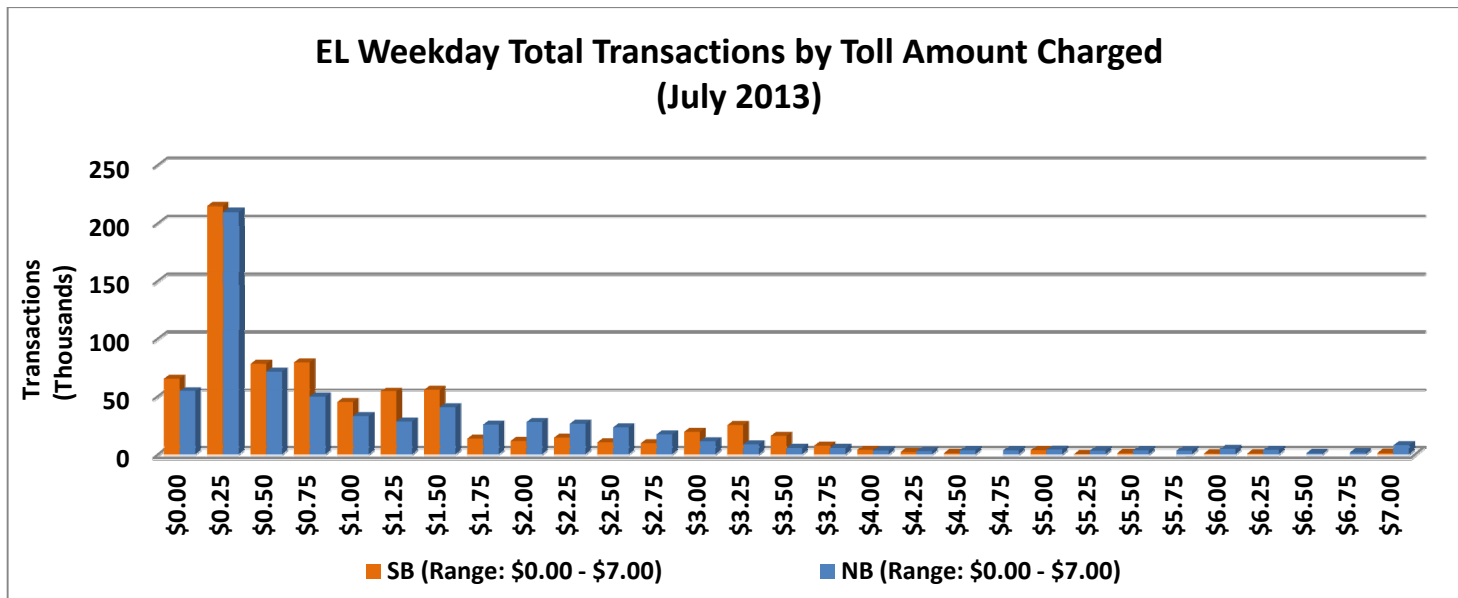


NOTE: ITD = Inception to Date



## Revenue/Tolls Statistics

\*\* Peak Period is defined as 6-9 AM (southbound) and 4-7 PM (northbound).

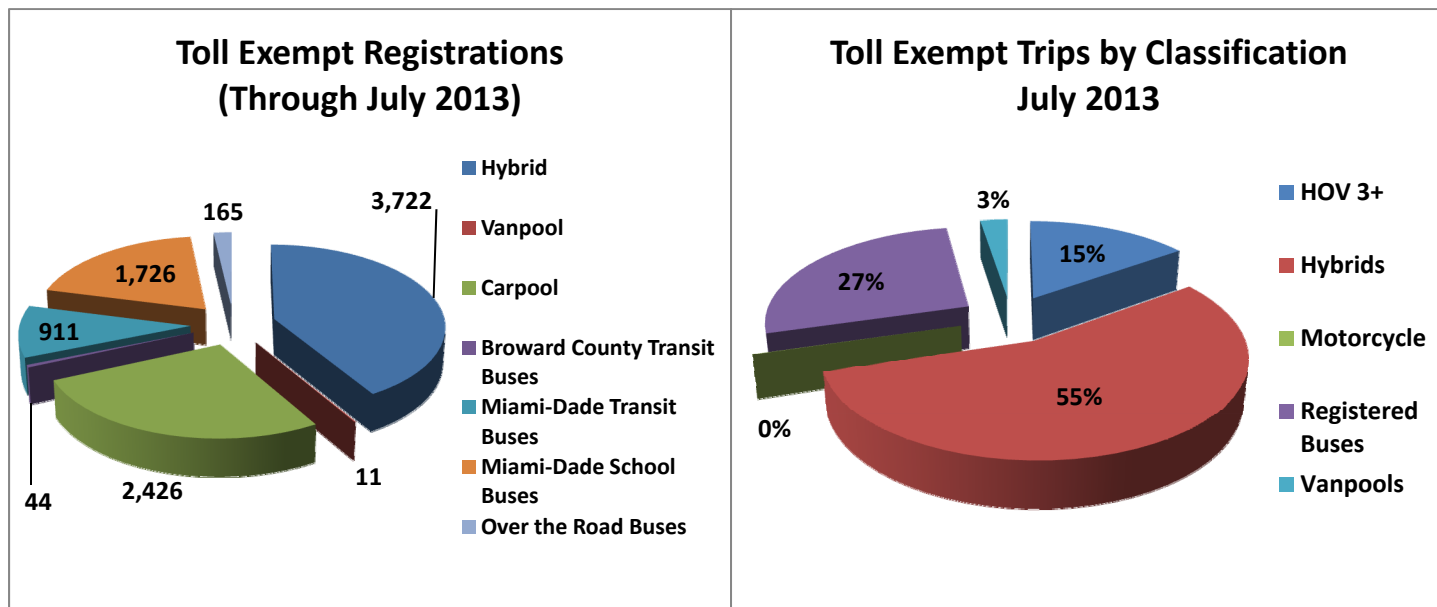


NOTE: ITD = Inception to Date

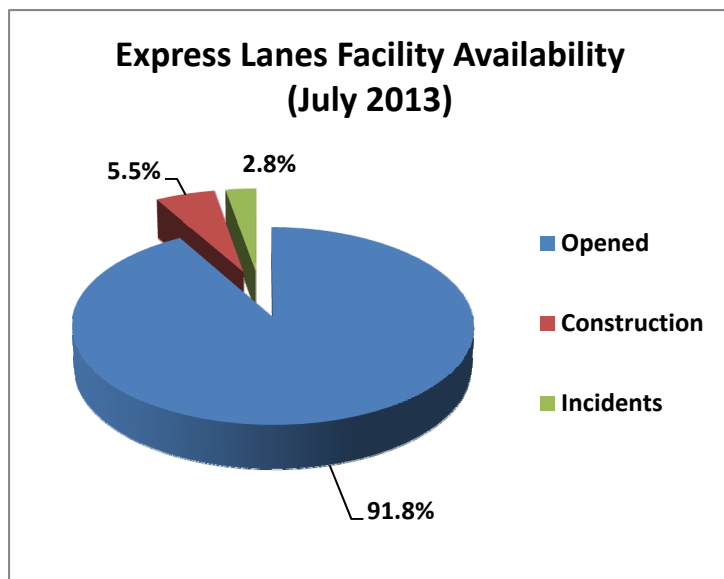


## Registrations—Toll Exempt Trips

The total registrations through July 2013 increased to 9,005. The 43,145 Toll Exempt Trips for this month are shown by classification below.



## Facility Availability



The entire 95 Express lanes (both directions) were open to motorists 91.8% of the time, while closed 5.5% due to 16 planned construction/maintenance events (each lasting approximately 5 hours, 10 minutes in duration, on average) and 2.7% due to 146 non-recurring events (each lasting approximately 16.3 minutes in duration, on average).